

Clinical Summary

On-X[®] Mitral Heart Valve

Quality of Life Data



ARTIVION™

On-X[®]
Mitral Heart Valve

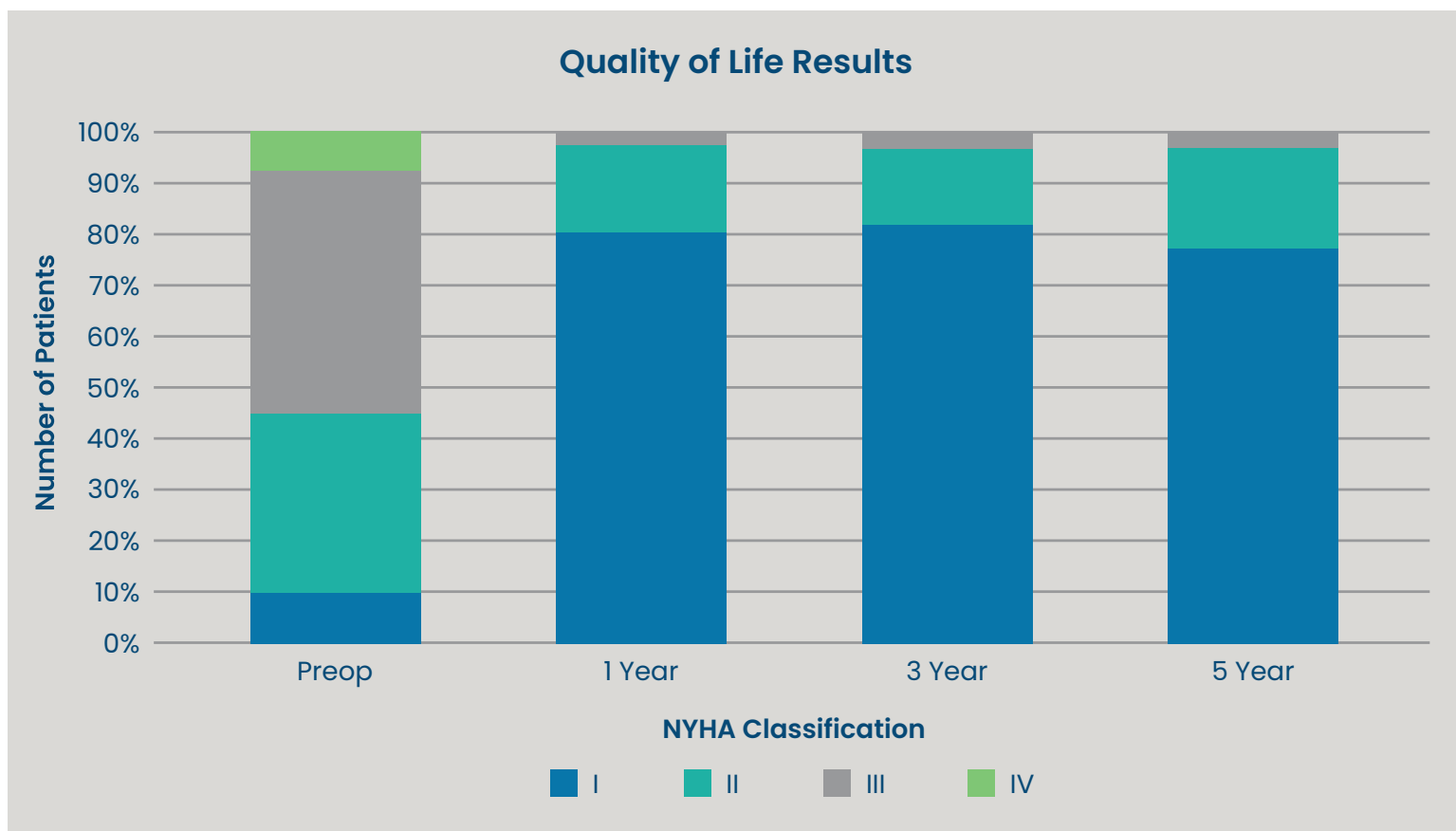
Clinical Summary

New Quality of Life Data: The On-X Mitral Valve Demonstrates Excellent and Sustained Improvement in Patient Outcomes in Large Landmark Study for Mechanical Mitral Valves.

The Prospective Randomized On-X Anticoagulation Clinical Trial (PROACT) Mitral Trial¹ is one of the largest studies ever conducted with mechanical mitral valves involving 401 patients (mean age 55 y/o) at 44 North American centers.

PROACT Mitral represents the most contemporary evidence on performance and anticoagulation for any mechanical mitral valve. Due to its size and scope, a similar study is likely to never be repeated.

Key Takeaway



Conclusion

The On-X Mechanical Mitral Valve, which is engineered for exceptional clinical performance, now has the most robust body of evidence supporting its use as demonstrated by sustained quality of life improvements in PROACT Mitral.

On-X Mitral Heart Valves should be managed at current guideline recommendations of 2.5-3.5 INR.

References

1. Chu M.W.A., et al. (2023) Low-Dose Versus Standard Warfarin After Mechanical Mitral Valve Replacement: A Randomized Trial. *Ann Thorac Surg*, S0003-4975(23)00005-X.

All products and indications are not available/approved in all markets. All trademarks owned by Artivion, Inc. or its subsidiaries. On-X Life Technologies, Inc. is a wholly owned subsidiary of Artivion, Inc. All other registered trademarks are owned by their respective owners. © 2023 Artivion, Inc. All rights reserved.

Artivion, Inc.
1655 Roberts Blvd., NW, Kennesaw, GA 30144 USA
Phone: 888-427-9654 | Fax: 770-590-3573 | E-mail: inquiries@artivion.com
For contact information by region, please visit: www.artivion.com/contact

 On-X Life Technologies, Inc, 1300 East Anderson Lane, Bldg B, Austin, TX 78752, USA

MLENG1635.000 (2023-07)